



# Let it be

Lyricists, Composers : John Lennon / Paul McCartney  
Singers : The Beatles

Solo piano

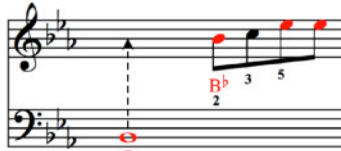
Level 3

Reading aid

Made to be Played

## Interpreting the reading aid

The arrows indicate when to play with the left hand



The red-colored notes are played on the black keyboard keys

The numbers indicate which finger plays the note (1 = thumb)

Note names:

E<sup>b</sup>+B<sup>b</sup>  
5 1

The rests and ties have been purposefully removed to make the score easier to read, to focus only on the notes to be played.

To establish the rhythm, consult your score without "reading aid" or download the score recorded in [noviscore.fr](http://noviscore.fr) for guidance.

♩ = 72

### A Introduction

Use pedal...

Chords: C+E+G+C (1 2 3 5), B+D+G (1 2 4), C+E+A (1 2 5), C+E+F+A (1 2 3 5), C+D+F+A

Bass clef notes: C (5), C (1), F# (3), G (1), G (5), A (5), A, G+G, F, F (1), 3

When I

Chords: C+E+G+C, B+D+G, F+A (3 5), C+E+G (1 2 4)

Bass clef notes: C (5), C, F# (3), G (1), G, F (5), F (13), C (5), C

### B Verses

find my - self in times of trou - ble Mo - ther Ma - ry comes

Chords: E+G (2 4), B+G (1 4), C (3), A+D (1 4)

Bass clef notes: C (5), C (5), G+C (2 1), C, G (5), D (2), G, A (5), E (3), A+C (2 1), G (3)

The complete sheet music is available on our site [noviscore.com](http://noviscore.com)