



Made to be Played

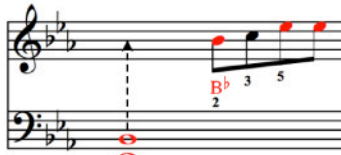
# Hello

Lyricists / Composers : Adele Adkins / Greg Kurstin  
Singer : Adele

**Solo piano**  
Level 2  
**Reading aid**

## Interpreting the reading aid

The arrows indicate when to play with the left hand



The red-colored notes are played on the black keyboard keys

The numbers indicate which finger plays the note (1 = thumb)

Note names:

E<sup>b</sup>+B<sup>b</sup>

5 1

The rests and ties have been purposefully removed to make the score easier to read, to focus only on the notes to be played.

To establish the rhythm, consult your score without "reading aid" or download the score recorded in [noviscore.fr](http://noviscore.fr) for guidance.

♩ = 78

### Introduction

Hel -

Musical notation for the introduction of 'Hello'. It consists of two staves: a treble clef staff and a bass clef staff. The key signature has three flats (Bb, Eb, Ab) and the time signature is 4/4. The melody in the treble clef starts with a half note chord of Ab and C, followed by a quarter note G and Bb, and then a quarter note F and Ab. The bass line in the bass clef starts with a half note chord of F and C, followed by a quarter note Eb and C, and then a quarter note Eb and Bb. Fingerings are indicated by numbers 1-5. Red notes are on black keys. Arrows point to notes in the bass clef.

Use pedal...

### A Verses

Musical notation for the first verse of 'Hello'. It consists of two staves: a treble clef staff and a bass clef staff. The key signature has three flats (Bb, Eb, Ab) and the time signature is 4/4. The melody in the treble clef starts with a half note chord of Ab and C, followed by a quarter note Bb, a quarter note G and Bb, and then a quarter note D and F. The bass line in the bass clef starts with a half note chord of F and C, followed by a quarter note Eb and C, and then a quarter note Eb and Bb. Fingerings are indicated by numbers 1-5. Red notes are on black keys. Arrows point to notes in the bass clef.

Musical notation for the second verse of 'Hello'. It consists of two staves: a treble clef staff and a bass clef staff. The key signature has three flats (Bb, Eb, Ab) and the time signature is 4/4. The melody in the treble clef starts with a half note chord of C, followed by a quarter note Ab and C, a quarter note G and Bb, a quarter note F and Ab, and then a quarter note Ab and C. The bass line in the bass clef starts with a half note chord of F and C, followed by a quarter note Eb and C, and then a quarter note Eb and Bb. Fingerings are indicated by numbers 1-5. Red notes are on black keys. Arrows point to notes in the bass clef.

Musical notation for the third verse of 'Hello'. It consists of two staves: a treble clef staff and a bass clef staff. The key signature has three flats (Bb, Eb, Ab) and the time signature is 4/4. The melody in the treble clef starts with a half note chord of Bb, followed by a quarter note Bb, a quarter note G and Bb, and then a quarter note D and F. The bass line in the bass clef starts with a half note chord of F and C, followed by a quarter note Eb and C, and then a quarter note Eb and Bb. Fingerings are indicated by numbers 1-5. Red notes are on black keys. Arrows point to notes in the bass clef.

The complete sheet music is available on our site [noviscore.com](http://noviscore.com)